

19 HANBURY STREET | EVENTS SPACE

19 HANBURY STREET

THE
T B R E W E R Y
M A N

19 HANBURY STREET | EVENTS SPACE



EVENTS



FASHION
SHOWS



POP UP



CONSUMER



EXHIBITIONS



FILM &
PHOTOGRAPHY

ABOUT

19 Hanbury Street is a newly redeveloped space, next door to Frameworks and GoodHood. This blank canvas is specially suited to events that require high visibility – brand activations, sample sales, exhibitions and product launches.

LOCATION

Located on the west end of Hanbury Street and south side of Ely's Yard, the space enjoys superb footfall and great visibility.

ADDRESS

19 Hanbury Street, London, E1 6QL

CAPACITY

Event specific

SIZE

1,350 sqft

LEVEL

Ground floor

CEILING HEIGHT

4m

19 HANBURY STREET | EVENTS SPACE



ACCESS

Access and loading is via Ely's Yard / Hanbury Street.

POWER

13 Amp Sockets.

COMMS

The Truman Brewery's dedicated on-site service provider, TruTec Services, can easily provide support, networking, telephony and internet connectivity to this location.

LIGHTING

House Lights.

SERVICES

19 Hanbury Street is serviced by a glass frontage and three sets of doors for entry & exit points.

SUPPLIERS

We recommend the use of the following teams:

EVENT PRODUCTION:

E1 PRODUCTIONS

INTERNET CONNECTIVITY:

TRUTEC SERVICES

SECURITY:

Trusec Security Ltd.
Event Security Services

EVENT CLEANING SERVICES:

The Truman Brewery
Event Cleaning Services

WILKES STREET

HANBURY STREET

THE TRUMAN BREWERY

A: 91 Brick Lane, London E1 6QL
T: 0207 770 6011
E: monika@trumanbrewery.com

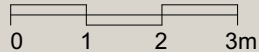
DRAWING NAME
19HA.ST

SPACE DETAILS
19 HANBURY STREET
BASIC PLAN AND
FRONT ELEVATION

VENUE LOCATION
19 Hanbury Street
Ground Floor, T Block
London E1

LEASE AREA (WITHIN RED BOUNDARY)
1480 SQ FT

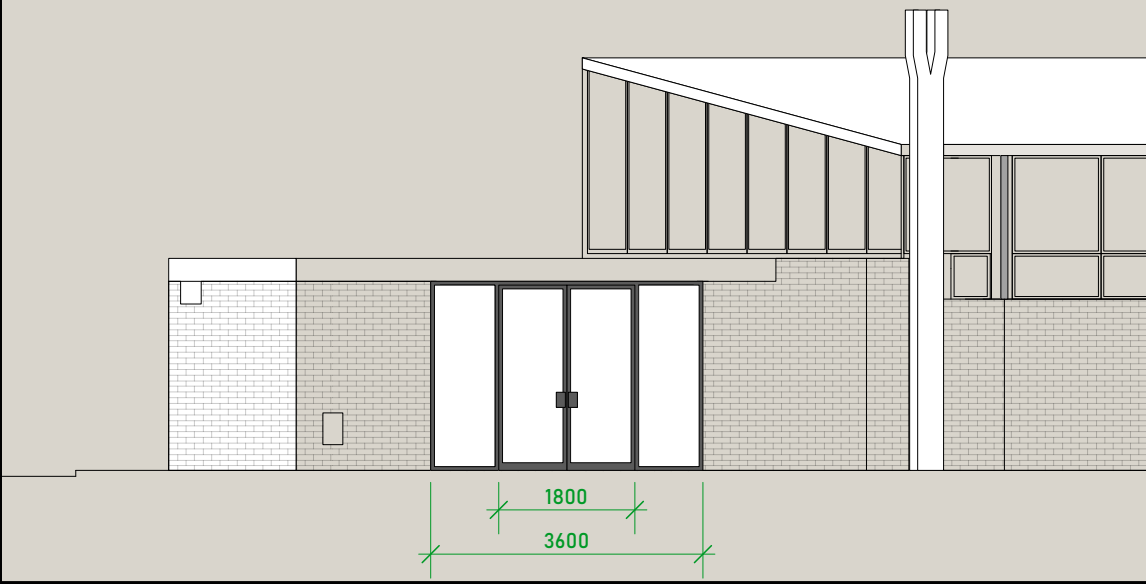
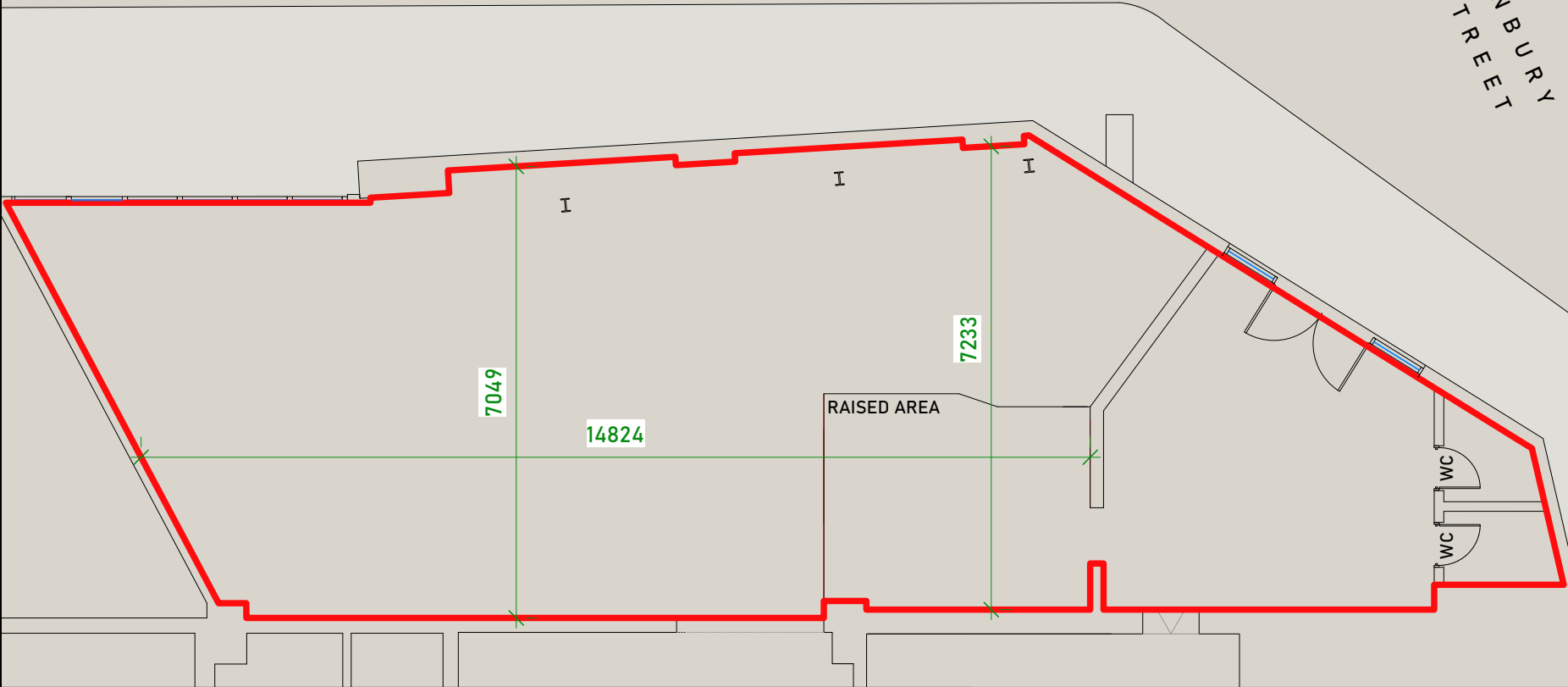
SCALE
1:100 @ A4



NOTES

All measurements are approximate.
Measurements in millimetres.

DO NOT SCALE .
IF IN DOUBT ASK.



PLAN

FRONT ELEVATION

TRANSPORT

Hanbury Street and The Truman Brewery have probably the most central Shoreditch location, and are easily reached by bus, rail, tube or on foot.

The venue benefits from close access to all forms of public transport. Liverpool Street and Shoreditch High Street stations are a short distance away, with Aldgate East within easy reach, offering fast connections across London and beyond.

Liverpool Street Station
Walking distance: 10 min

CENTRAL

CIRCLE

H&C

METROPOLITAN

NATIONAL RAIL

OVERGROUND

Shoreditch High Street Station
Walking distance: 5 min

OVERGROUND

Aldgate East Station
Walking distance: 10 min

DISTRICT

H&C

Whitechapel Station
Walking distance: 15 min

DISTRICT

H&C

OVERGROUND

Contact us to arrange a viewing:

Phone

+44(0)20 7770 6001

Email

events@trumanbrewery.com

Drop in

The Truman Brewery Events Department,
E y's Yard,
15 Hanbury Street,
London E1 6QR