

F BLOCK GROUND FLOOR | EVENTS SPACE

F BLOCK GROUND FLOOR

THE HUMAN
T B R E W E R Y

F BLOCK GROUND FLOOR | EVENTS SPACE



EVENTS



MARKETS



RETAIL



FOOD & DRINK



LICENSED

ABOUT

F Block Ground Floor comprises G1+G4+G5 and offers over 21,000 sqft of white washed industrial warehouse space with multiple glass front entrances on opening onto Ely's Yard, Hanbury Street and Brick Lane. Benefiting from perpetually high footfall and just seconds away from the energetic buzz of Brick Lane, F Block Ground Floor is an ideal space for markets, consumer shows, brand experiences and exhibitions.

LOCATION

F Block Ground Floor is located on the west side of the Truman Brewery Estate, bounded by Brick Lane, Hanbury Street and Ely's Yard.

The area attracts many thousands of visitors to the bustling work spaces, themed events, weekend markets, eye-popping street art, boutiques, cafes and rich diversity of restaurants.

ADDRESS

Ely's Yard, London, E1 6QL

CAPACITY

Event specific.

SIZE

21,661 sqft

LEVEL

Street Level / Raised Ground Floor

CEILING HEIGHT

2.84 - 3.9m

F BLOCK GROUND FLOOR | EVENTS SPACE



ACCESS

Guest access is via Brick Lane, Hanbury Street or Ely's Yard.

Loading access is via Ely's Yard.

SERVICES

Water supply is available, subject to prior consent.

G1 benefits from 7 shared toilet cubicles, a disabled cubicle / baby changing cubicle.

G4 benefits from 1 x male toilets cubicle and three urinals, three female toilet cubicles and a disabled cubicle.

G5 benefits from 4 x male toilet cubicles and urinals, with 6 x female toilet cubicles.

COMMS

The Truman Brewery's dedicated on-site service provider, TruTec Services, can easily provide support, networking, telephony and internet connectivity to this location.

POWER

Twin 13A Sockets throughout.

G1: 4 x 63A 3 Phase C Form Socket.

G4: 1 x 32A Single Phase Socket.

G5: 1 x 125A 3 Phase C Form Socket.

G5: 2 x 32A Single Phase C Form Socket.

LIGHTING

Strip Lights.

SUPPLIERS

We recommend the use of the following teams:

EVENT PRODUCTION:

E1 PRODUCTIONS

INTERNET CONNECTIVITY:

TRUTEC SERVICES

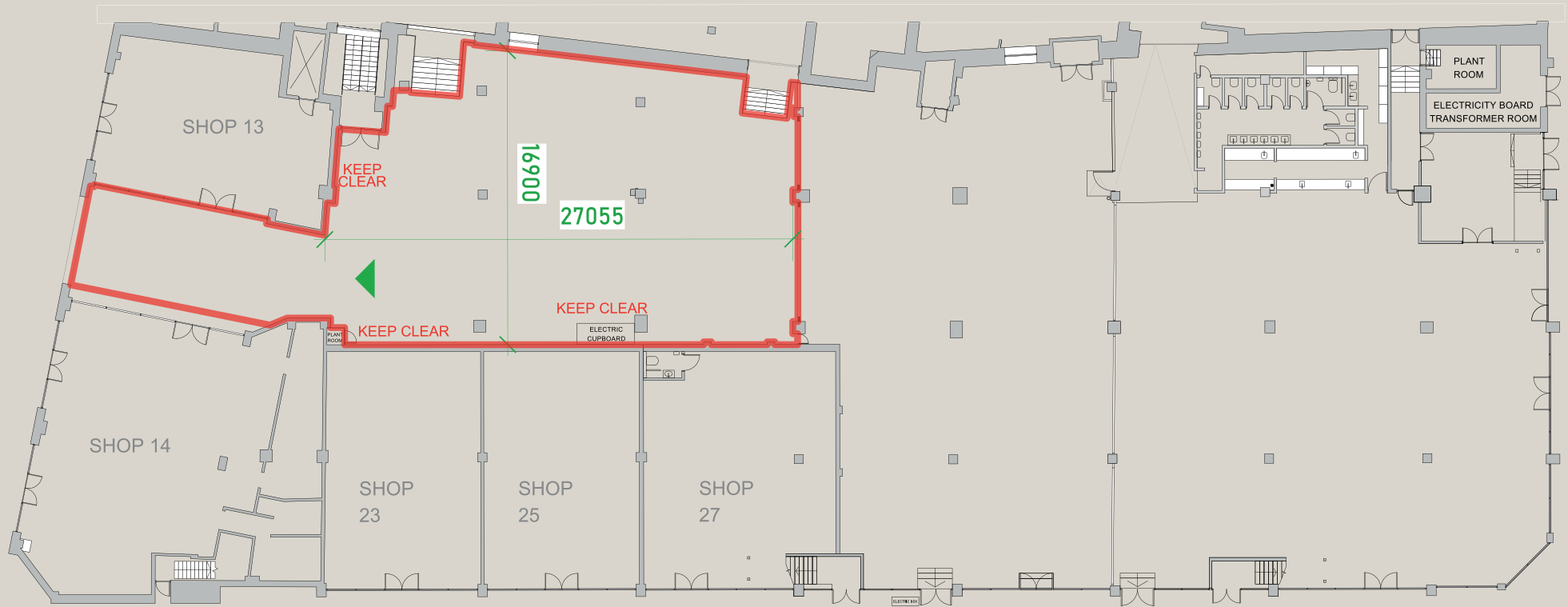
SECURITY:

Trusec Security Ltd.
Event Security Services

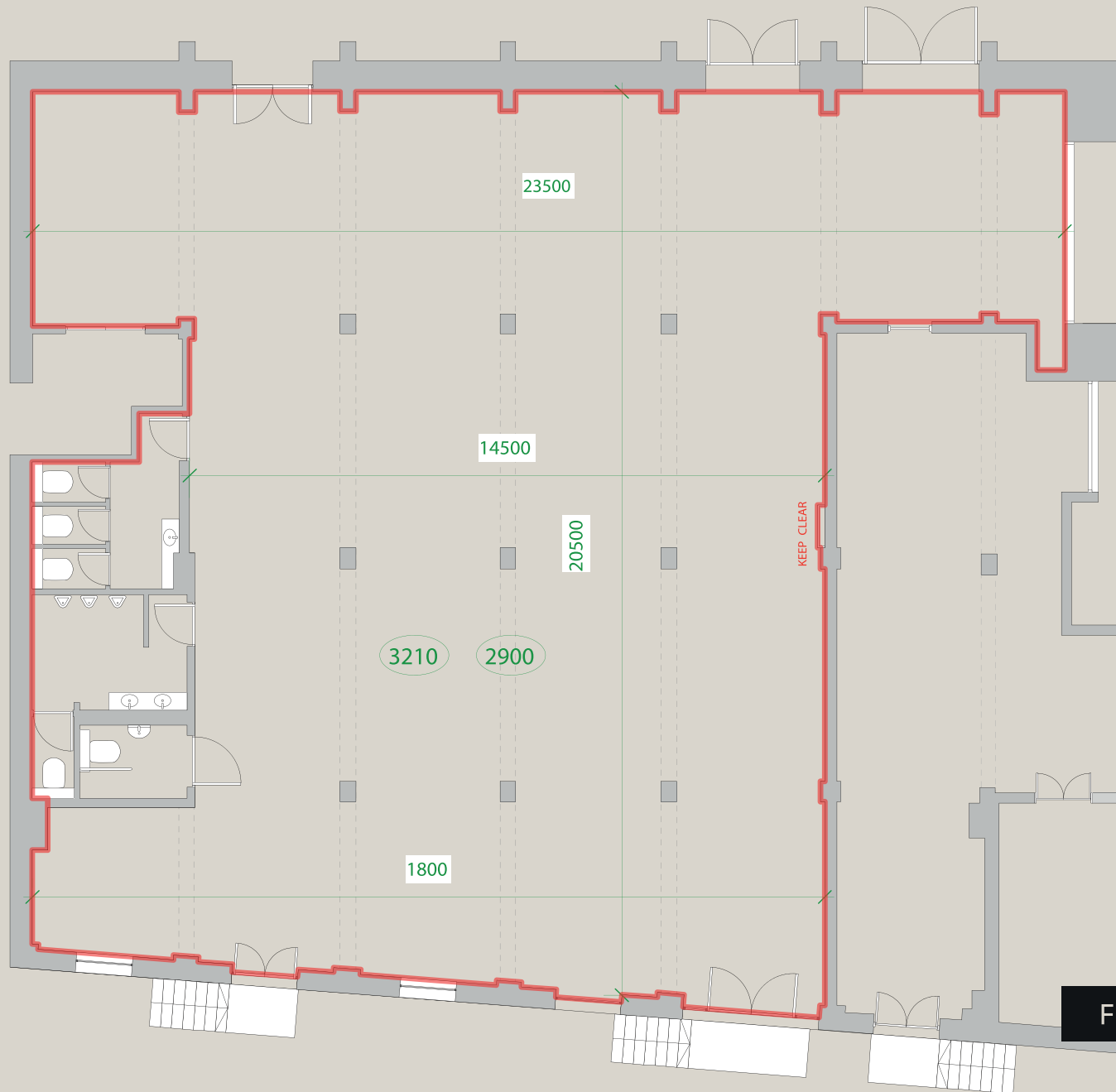
EVENT CLEANING SERVICES:

The Truman Brewery
Event Cleaning Services

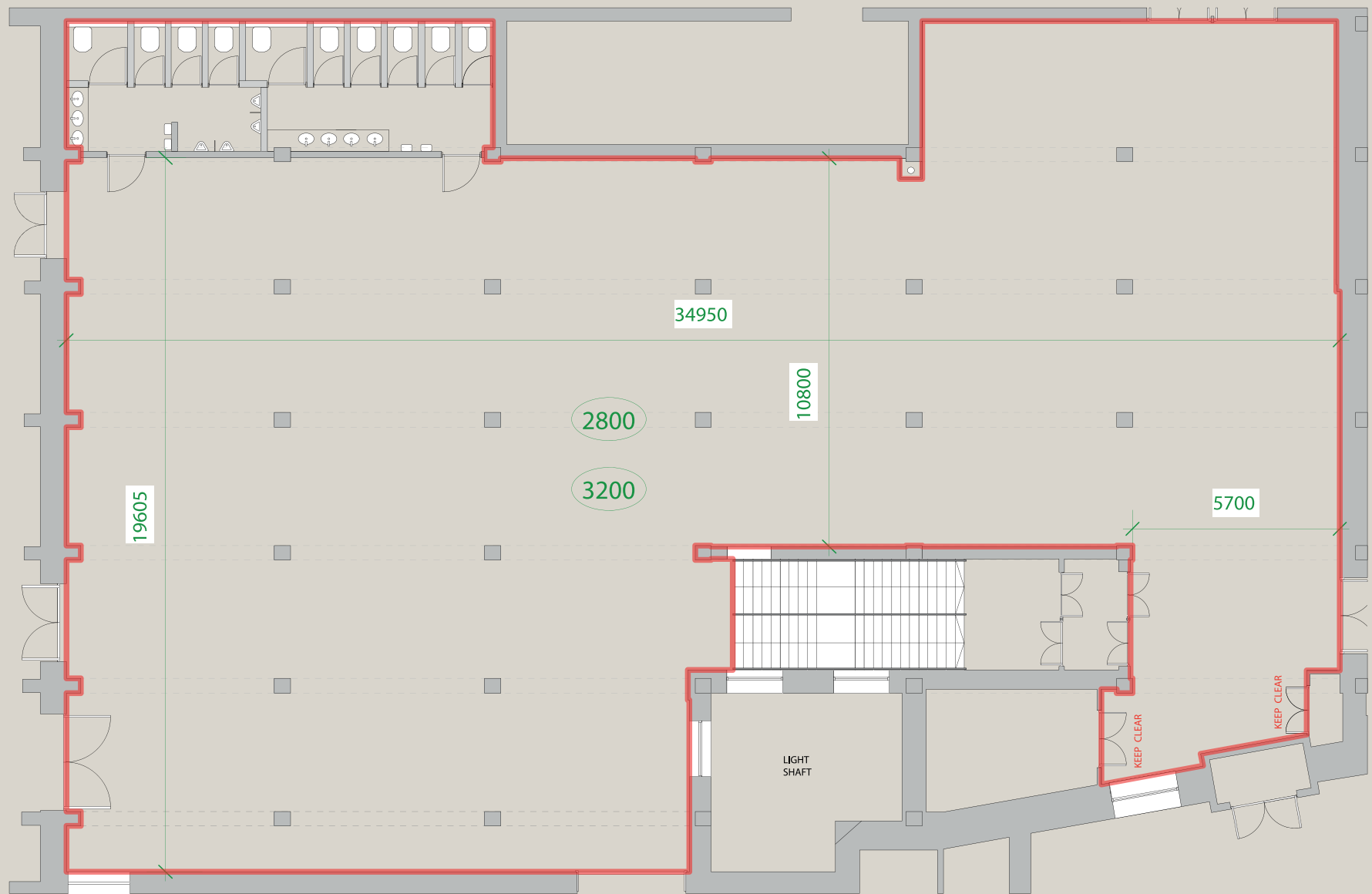




FLOOR PLAN - G1



FLOOR PLAN - G4



FLOOR PLAN - G5



Exit →

SWEDISH
NINJA

nola

TRANSPORT

F Block and The Truman Brewery have probably the most central Shoreditch location, and are easily reached by bus, rail, tube or on foot.

The venue benefits from close access to all forms of public transport. Liverpool Street and Shoreditch High Street stations are a short distance away, with Aldgate East within easy reach, offering fast connections across London and beyond.

Liverpool Street Station
Walking distance: 10 min

CENTRAL

CIRCLE

H&C

METROPOLITAN

NATIONAL RAIL

OVERGROUND

Shoreditch High Street Station
Walking distance: 5 min

OVERGROUND

Aldgate East Station
Walking distance: 10 min

DISTRICT

H&C

Whitechapel Station
Walking distance: 15 min

DISTRICT

H&C

OVERGROUND

Contact us to arrange a viewing:

Phone

+44(0)20 7770 6001

Email

events@trumanbrewery.com

Drop in

The Truman Brewery Events Department,
E y's Yard,
15 Hanbury Street,
London E1 6QR

