

F BLOCK S2 | EVENTS SPACE

F BLOCK S2

THE
TRUMAN
BREWERY

F BLOCK S2 | EVENTS SPACE



EVENTS



FASHION
SHOWS



EXHIBITIONS



TRADE
SHOWS



FILMING &
PHOTOGRAPHY



LICENSED

ABOUT

S2 is one of four rooms that makes up the second floor of Truman Brewery's growing Events Building - F Block. The space has been sensitively developed to maintain the feel of the old warehouse whilst still being functional for events. Great for exhibitions, networking events, filming and photo shoots.

LOCATION

Located on the second floor of F Block, close to the corner of Brick Lane and Dray Walk. In one of London's most vibrant and energetic areas, known throughout London, the iconic Truman chimney and ever-active Estate is frequented by media, creative, fashion and tech industry denizens. The area attracts many thousands of visitors to the bustling work spaces, themed events, weekend markets, eye-popping street art, boutiques, cafes and rich diversity of restaurants.

ADDRESS

85 Brick Lane, London, E1 6QL

CAPACITY

Event specific

SIZE

8,423 sqft

LEVEL

Second floor

CEILING HEIGHT

3.5m

F BLOCK S2 | EVENTS SPACE



ACCESS

Guest Access is via a shared entrance from 85 Brick Lane with stairs to the second floor.
Lift access / Loading Bay Access from Ely's Yard, subject to availability.

SERVICES

The space does not benefit from dedicated toilets.

COMMS

The Truman Brewery's dedicated on-site service provider, TruTec Services, can easily provide support, networking, telephony and internet connectivity to this location.

POWER

1 x 63A 3 Phase C Form Socket.
Twin 13A Sockets throughout.

LIGHTING

Strip Lights.

SUPPLIERS

We recommend the use of the following teams:

EVENT PRODUCTION:

E1 PRODUCTIONS

INTERNET CONNECTIVITY:

TRUTEC SERVICES

SECURITY:

Trusec Security Ltd.
Event Security Services

EVENT CLEANING SERVICES:

The Truman Brewery
Event Cleaning Services





THE TRUMAN BREWERY

A: 91 Brick Lane, London E1 6QL
 T: 0207 770 6011
 E: monika@trumanbrewery.com

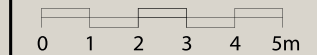
DRAWING NAME
F.02.S2

SPACE DETAILS
**F BLOCK
 2ND FLOOR - S2
 BASIC PLAN**

VENUE LOCATION
**F Block
 15 Hanbury Street
 London E1**

LEASE AREA (WITHIN RED BOUNDARY)
8423 sqft

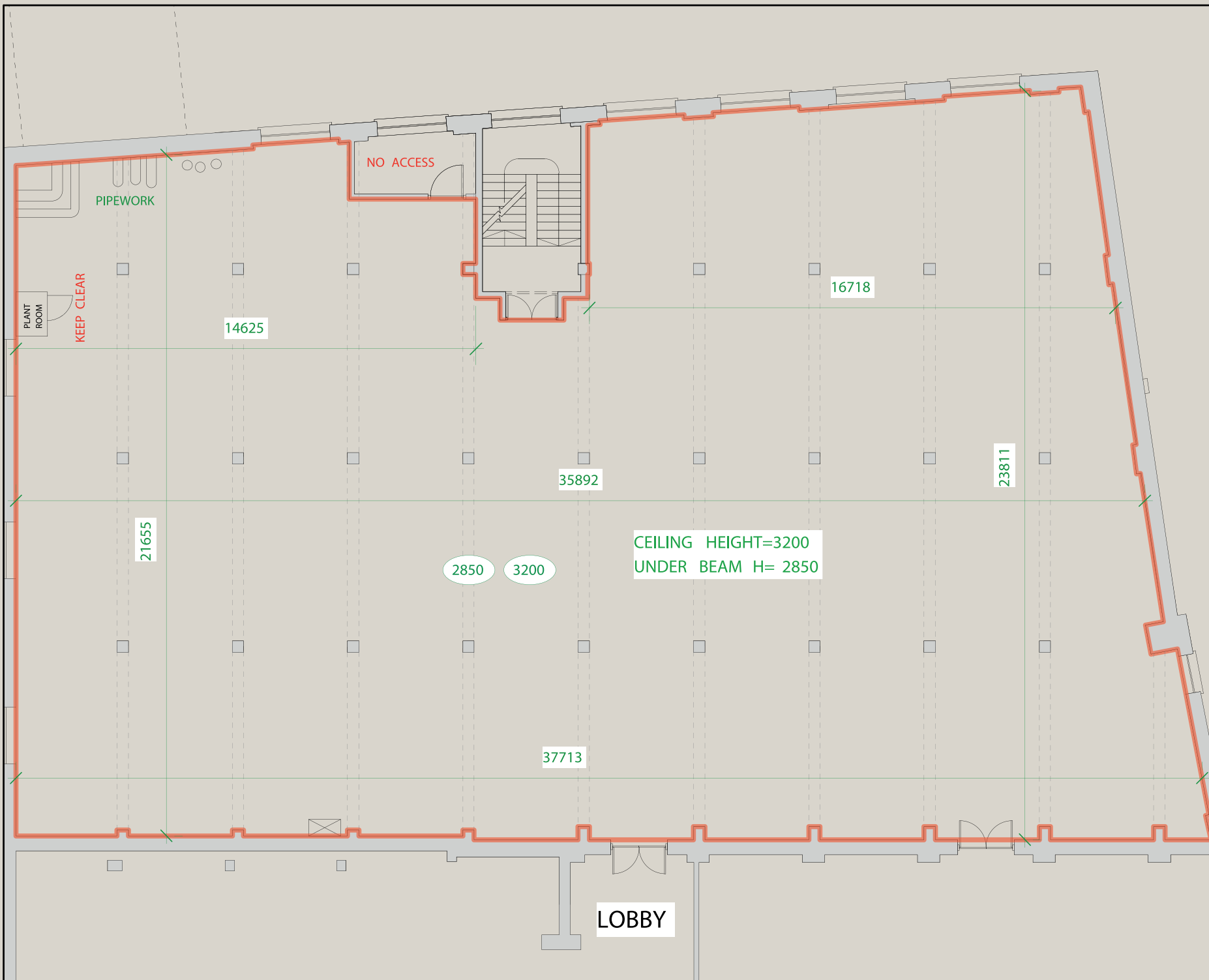
SCALE
1:160 @ A4



- NOTES
- SIGNIFIES CEILING STRUCTURES, MOSTLY BEAMS
 - CEILING HEIGHTS GIVEN IN MILLIMETRES ROUNDED DOWN

All measurements are approximate .
 Measurements in millimetres .

DO NOT SCALE .
 IF IN DOUBT ASK .





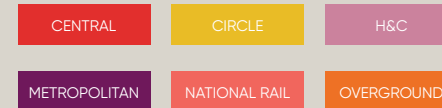
T
R
U
M
A
N

TRANSPORT

F Block and The Truman Brewery have probably the most central Shoreditch location, and are easily reached by bus, rail, tube or on foot.

The venue benefits from close access to all forms of public transport. Liverpool Street and Shoreditch High Street stations are a short distance away, with Aldgate East within easy reach, offering fast connections across London and beyond.

Liverpool Street Station
Walking distance: 10 min



Shoreditch High Street Station
Walking distance: 5 min



Aldgate East Station
Walking distance: 10 min



Whitechapel Station
Walking distance: 15 min



Contact us to arrange a viewing:

Phone

+44(0)20 7770 6001

Email

events@trumanbrewery.com

Drop in

The Truman Brewery Events Department,
E y's Yard,
15 Hanbury Street,
London E1 6QR