

F BLOCK G4 | EVENTS SPACE

F BLOCK G4

THE
TRUMAN
BREWERY

F BLOCK G4 | EVENTS SPACE



EVENTS



MARKETS



RETAIL



FOOD & DRINK



LICENSED

ABOUT

G4 is a versatile space with glass fronted doors, crisp white walls and polished concrete floors, that can function as a standalone space or as a gateway to the Events Building – F Block, connecting to over 100,000 sqft of space across multiple floors.

LOCATION

G4 is located on a raised ground floor on the west side of F Block, with frontage on Ely's Yard.

The area attracts many thousands of visitors to the bustling work spaces, themed events, weekend markets, eye-popping street art, boutiques, cafes and rich diversity of restaurants.

ADDRESS

Ely's Yard, London, E1 6QL

CAPACITY

230, but can be increased to 490 with additional space G5

SIZE

4,114 sqft

LEVEL

Street Level / Raised Ground Floor

CEILING HEIGHT

2.84m

F BLOCK G4 | EVENTS SPACE



ACCESS

Access is via Ely's Yard, with 2 staircases, each leading up to a set of front doors.

SERVICES

Water supply is available, subject to prior consent. The space benefits from 1 x male toilet and three urinals, three female cubicles and a disabled toilet.

COMMS

The Truman Brewery's dedicated on-site service provider, TruTec Services, can easily provide support, networking, telephony and internet connectivity to this location.

POWER

1 x 32A Single Phase C Form Socket.
Twin 13A Sockets throughout.

LIGHTING

Strip Lights.

SUPPLIERS

We recommend the use of the following teams:

EVENT PRODUCTION:

E1 PRODUCTIONS

INTERNET CONNECTIVITY:

TRUTEC SERVICES

SECURITY:

Trusec Security Ltd.
Event Security Services

EVENT CLEANING SERVICES:

The Truman Brewery
Event Cleaning Services





THE TRUMAN BREWERY

A: 91 Brick Lane, London E1 6QL
T: 0207 770 6011
E: monika@trumanbrewery.com

DRAWING NAME

F.00.G4

SPACE DETAILS

F BLOCK
GROUND FLOOR - G4
BASIC PLAN

VENUE LOCATION

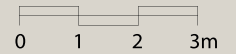
F Block
15 Hanbury Street
London E1

LEASE AREA (WITHIN RED BOUNDARY)

4114 sqft

SCALE

1:130 @ A4



NOTES

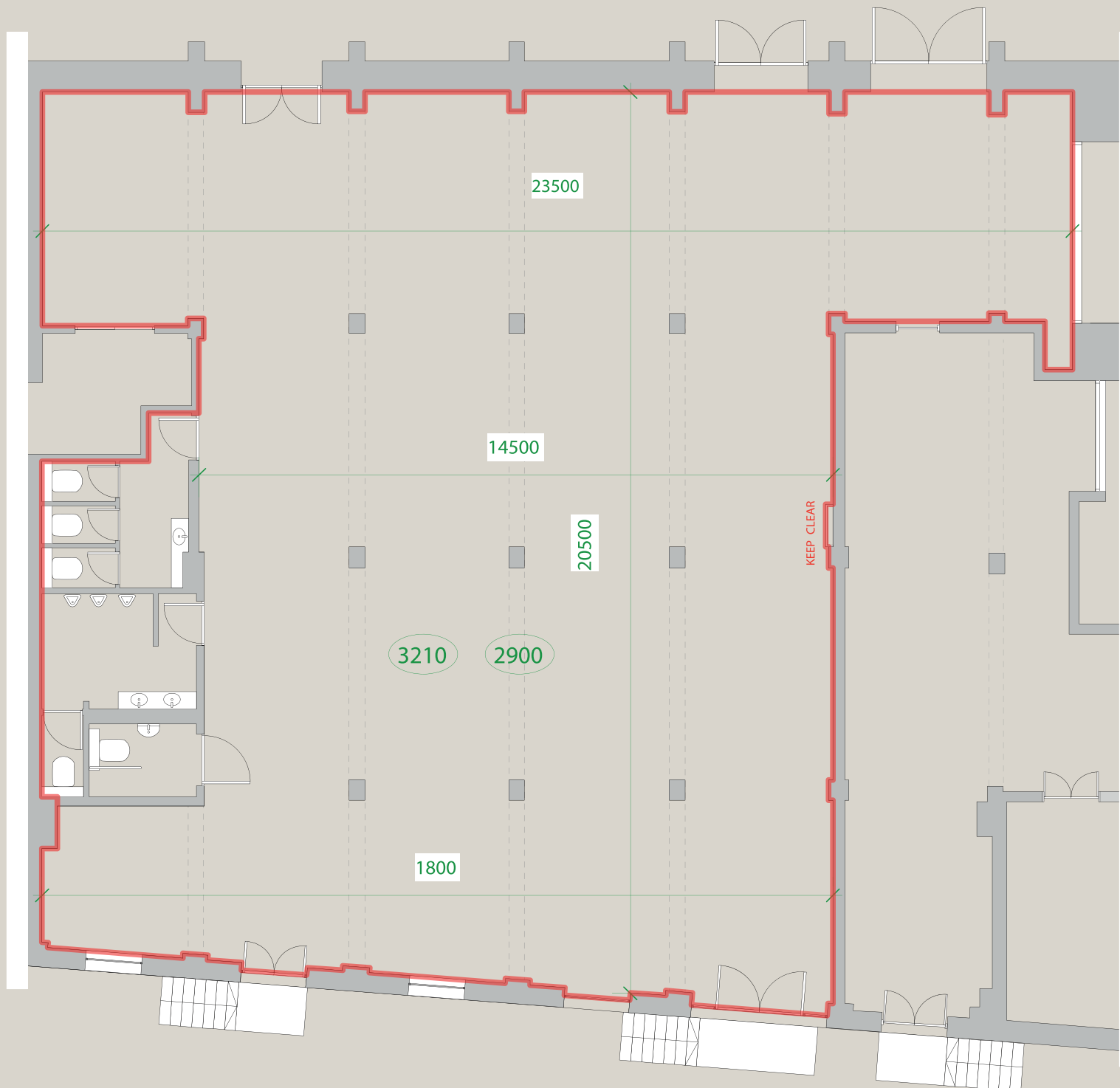
SIGNIFIES CEILING STRUCTURES, MOSTLY BEAMS

CEILING HEIGHTS GIVEN IN MILLIMETRES ROUNDED DOWN

1234

All measurements are approximate. Measurements in millimetres.

DO NOT SCALE.
IF IN DOUBT ASK.



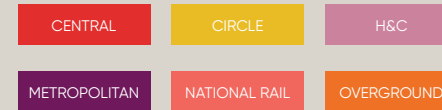


TRANSPORT

F Block and The Truman Brewery have probably the most central Shoreditch location, and are easily reached by bus, rail, tube or on foot.

The venue benefits from close access to all forms of public transport. Liverpool Street and Shoreditch High Street stations are a short distance away, with Aldgate East within easy reach, offering fast connections across London and beyond.

Liverpool Street Station
Walking distance: 10 min



Shoreditch High Street Station
Walking distance: 5 min



Aldgate East Station
Walking distance: 10 min



Whitechapel Station
Walking distance: 15 min



Contact us to arrange a viewing:

Phone

+44(0)20 7770 6001

Email

events@trumanbrewery.com

Drop in

The Truman Brewery Events Department,
E y's Yard,
15 Hanbury Street,
London E1 6QR