

F BLOCK T4 | EVENTS SPACE

F BLOCK T4

THE
TRUMAN
BREWERY

F BLOCK T4 | EVENTS SPACE



EVENTS



FASHION
SHOWS



CONFERENCES



EXHIBITIONS



TRADE
SHOWS



LICENSED

ABOUT

F Block T4 is the smallest of our five first floor rooms available for hire in our main Events Building, F Block. The warehouse windows open up to Ely's Yard, flooding the immediate part of the room with natural light. This 5000sqft space is a great space for meetings, smaller break outs, and can service larger events when hired with any of the connecting rooms.

LOCATION

T4 is located on the First Floor of F Block. Street access into T4 is via Ely's Yard. F Block is situated in one of London's most vibrant and energetic areas known throughout London. The iconic Truman chimney and ever-active Estate is frequented by media, creative, fashion and tech industry denizens. The area attracts many thousands of visitors to the bustling work spaces, themed events, weekend markets, eye-popping street art, boutiques, cafes and rich diversity of restaurants.

ADDRESS

Ely's Yard, Corner of 15 Hanbury Street, E1 6QR

CAPACITY

Event specific

SIZE

4,852 sqft

LEVEL

First floor

CEILING HEIGHT

2.7m



31

ACCESS

Street access into T4 is via the stairs at the Ely's Yard entrance. Located on the first floor of F Block.

Lift access/Loading Bay Access from Ely's Yard car park (subject to prior agreement).

SERVICES

2 x male toilets and urinals, and 5 x female toilets.

COMMS

The Truman Brewery's dedicated on-site service provider, TruTec Services, can easily provide support, networking, telephony and internet connectivity to this location.

POWER

Twin 13A Sockets throughout.

LIGHTING

Strip Lights.

SUPPLIERS

We recommend the use of the following teams:

EVENT PRODUCTION:

E1 PRODUCTIONS

INTERNET CONNECTIVITY:

TRUTEC SERVICES

SECURITY:

Trusec Security Ltd.
Event Security Services

EVENT CLEANING SERVICES:

The Truman Brewery
Event Cleaning Services





verticalfurniture

Vertical Furniture
A collection of innovative, space-saving furniture designs, including chairs and tables, showcased in a modern gallery setting.

THE TRUMAN BREWERY

A: 91 Brick Lane, London E1 6QL
T: 0207 770 6011
E: monika@trumanbrewery.com

DRAWING NAME

F.01.T4

SPACE DETAILS

F BLOCK
1ST FLOOR - T4
BASIC PLAN

VENUE LOCATION

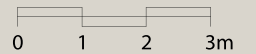
F Block
15 Hanbury Street
London E1

LEASE AREA (WITHIN RED BOUNDARY)

4852 sqft

SCALE

1:120 @ A4



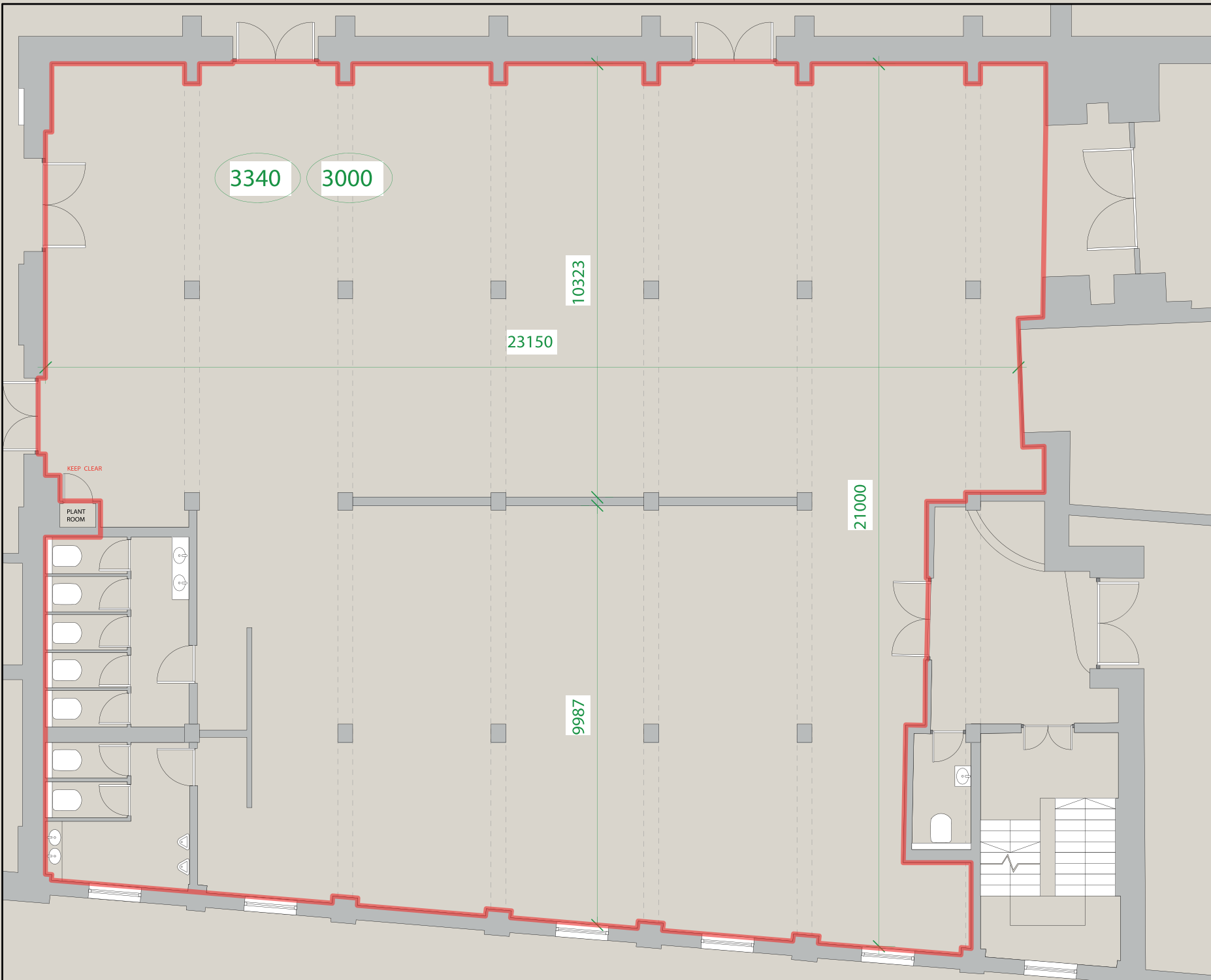
NOTES

--- SIGNIFIES CEILING STRUCTURES , MOSTLY BEAMS

1234 CEILING HEIGHTS GIVEN IN MILLIMETRES ROUNDED DOWN

All measurements are approximate . Measurements in millimetres .

DO NOT SCALE . IF IN DOUBT ASK .



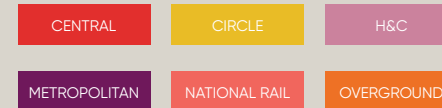


TRANSPORT

F Block and The Truman Brewery have probably the most central Shoreditch location, and are easily reached by bus, rail, tube or on foot.

The venue benefits from close access to all forms of public transport. Liverpool Street and Shoreditch High Street stations are a short distance away, with Aldgate East within easy reach, offering fast connections across London and beyond.

Liverpool Street Station
Walking distance: 10 min



Shoreditch High Street Station
Walking distance: 5 min



Aldgate East Station
Walking distance: 10 min



Whitechapel Station
Walking distance: 15 min



Contact us to arrange a viewing:

Phone

+44(0)20 7770 6001

Email

events@trumanbrewery.com

Drop in

The Truman Brewery Events Department,
E y's Yard,
15 Hanbury Street,
London E1 6QR