

F BLOCK T2 | EVENTS SPACE

F BLOCK T2

THE
TRUMAN
BREWERY

F BLOCK T2 | EVENTS SPACE



EVENTS



FASHION
SHOWS



CONFERENCES



EXHIBITIONS



TRADE
SHOWS



LICENSED

ABOUT

F Block T2 is one of five first floor rooms that makes up the 1st floor of The Truman Brewery's Events Building. T2 benefits from white washed walls, concrete floors and original warehouse windows. The space can be hired independently or with additional rooms on the first floor and is supposed for theatre style requirements or presentations.

LOCATION

Street access into T2 is via the entrance on 85 Brick Lane. F Block is situated in one of London's most vibrant and energetic areas known throughout London. The iconic Truman chimney and ever-active Estate is frequented by media, creative, fashion and tech industry denizens. The area attracts many thousands of visitors to the bustling work spaces, themed events, weekend markets, eye-popping street art, boutiques, cafes and rich diversity of restaurants.

ADDRESS

85 Brick Lane, London, E1 6QL

CAPACITY

Event specific

SIZE

7,793 sqft

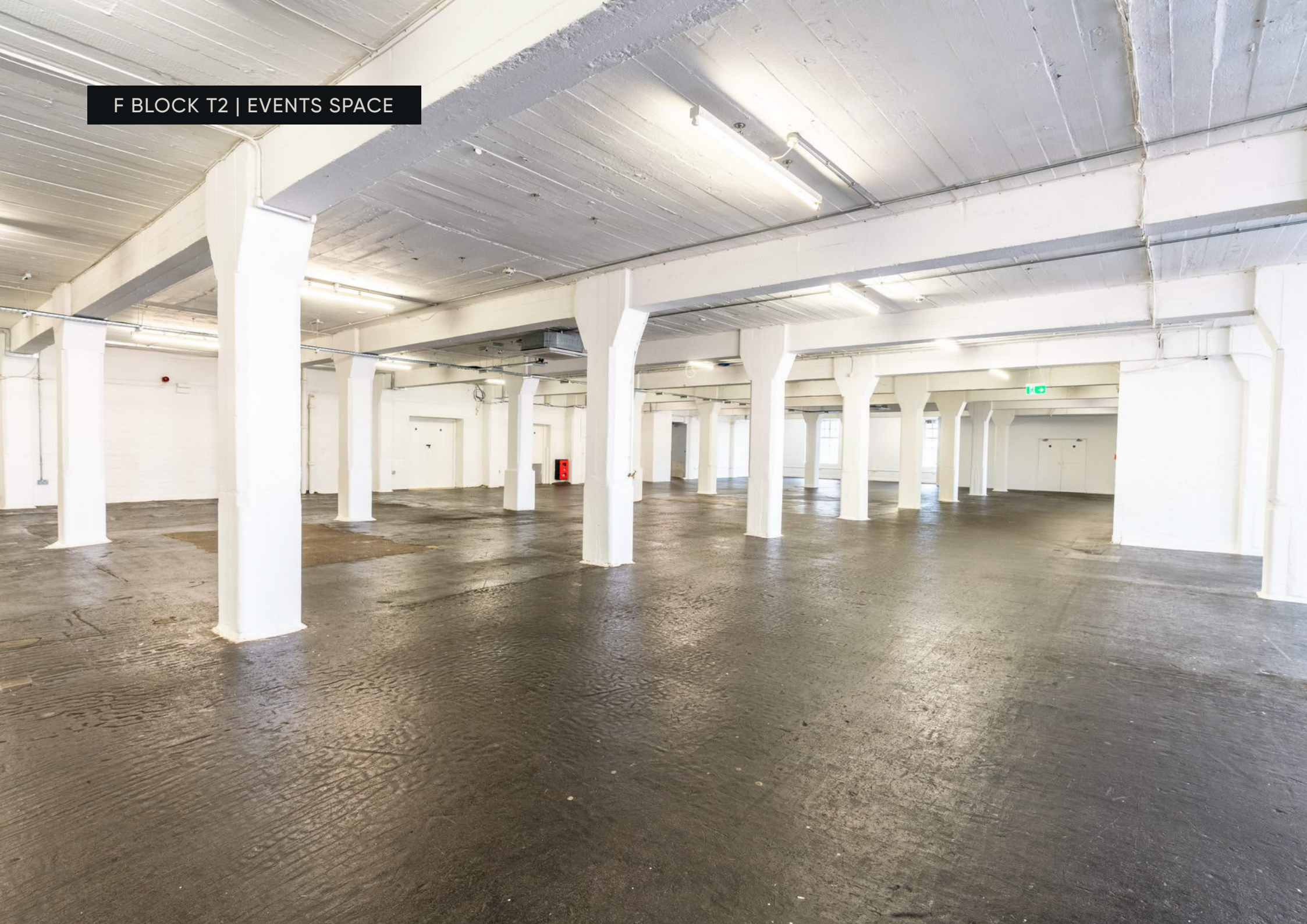
LEVEL

First floor

CEILING HEIGHT

2.7m

F BLOCK T2 | EVENTS SPACE



ACCESS

Street access into T2 is via the entrance 85 Brick Lane. Located on the first floor of F Block, on the corner of Brick Lane and Dray Walk.

Lift access/Loading Bay Access from Ely's Yard car park (subject to prior agreement).

SERVICES

4 x male toilets with urinals and 6 x female toilets are accessible from this space.

COMMS

The Truman Brewery's dedicated on-site service provider, TruTec Services, can easily provide support, networking, telephony and internet connectivity to this location.

POWER

1 x 32A 3 Phase C Form Socket.
1 x 32A Single Phase C Form Socket.
Twin 13A Sockets throughout.

LIGHTING

Strip Lights.

SUPPLIERS

We recommend the use of the following teams:

EVENT PRODUCTION:

E1 PRODUCTIONS

INTERNET CONNECTIVITY:

TRU TEC SERVICES

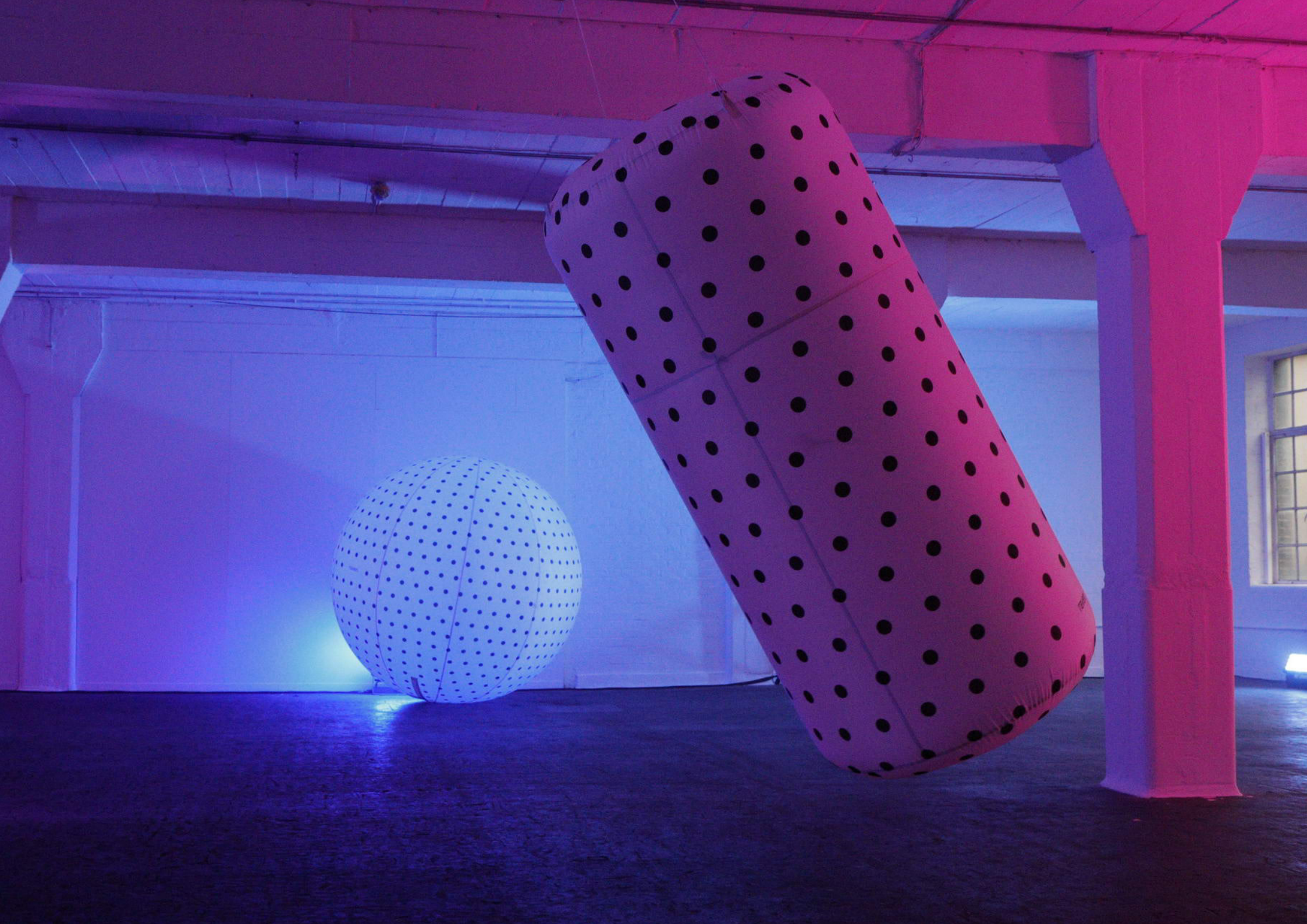
SECURITY:

Trusec Security Ltd.
Event Security Services

EVENT CLEANING SERVICES:

The Truman Brewery
Event Cleaning Services





THE TRUMAN BREWERY

A: 91 Brick Lane, London E1 6QL
T: 0207 770 6011
E: monika@trumanbrewery.com

DRAWING NAME

F.01.T2

SPACE DETAILS

F BLOCK
1ST FLOOR - T2
BASIC PLAN

VENUE LOCATION

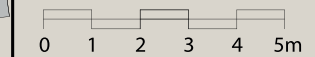
F Block
15 Hanbury Street
London E1

LEASE AREA (WITHIN RED BOUNDARY)

7793 sqft

SCALE

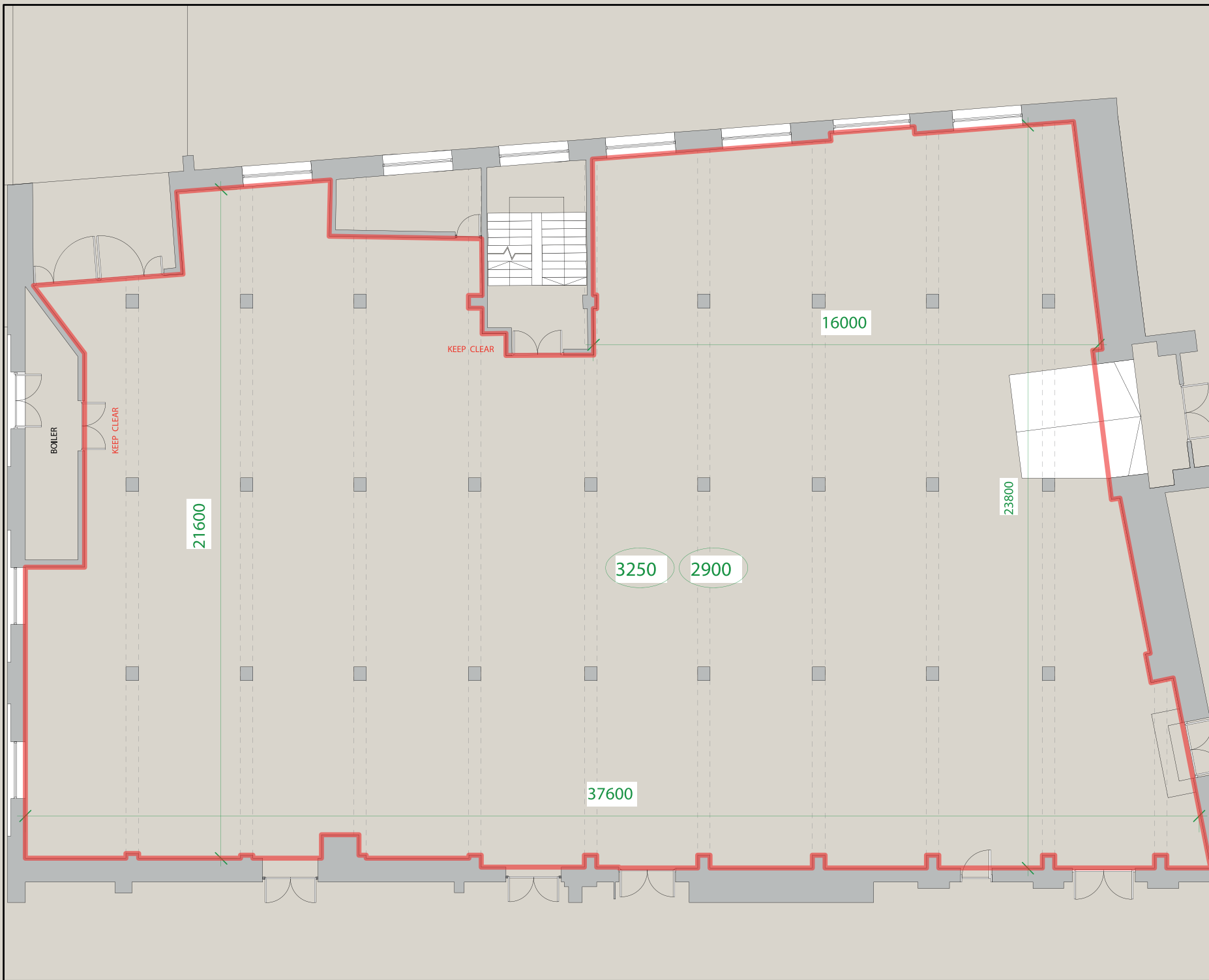
1:160 @ A4



NOTES

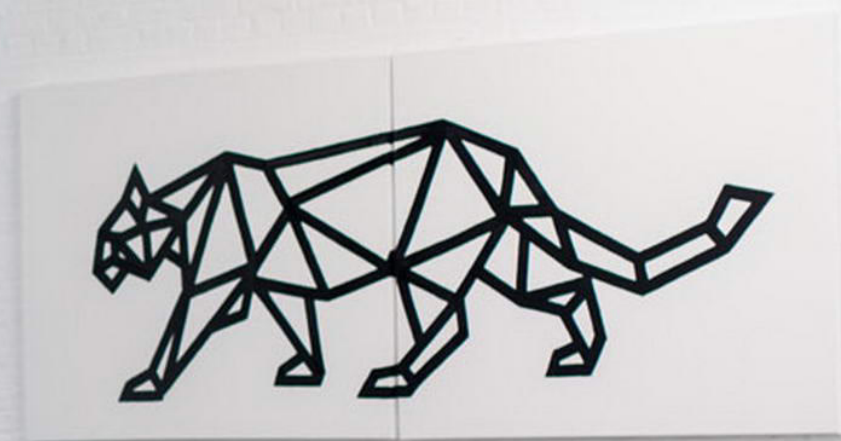
--- SIGNIFIES CEILING STRUCTURES , MOSTLY BEAMS

1234 CEILING HEIGHTS GIVEN IN MILLIMETRES ROUNDED DOWN



All measurements are approximate .
Measurements in millimetres .

DO NOT SCALE .
IF IN DOUBT ASK .

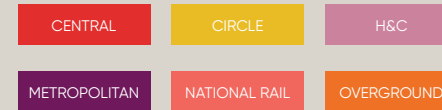


TRANSPORT

F Block and The Truman Brewery have probably the most central Shoreditch location, and are easily reached by bus, rail, tube or on foot.

The venue benefits from close access to all forms of public transport. Liverpool Street and Shoreditch High Street stations are a short distance away, with Aldgate East within easy reach, offering fast connections across London and beyond.

Liverpool Street Station
Walking distance: 10 min



Shoreditch High Street Station
Walking distance: 5 min



Aldgate East Station
Walking distance: 10 min



Whitechapel Station
Walking distance: 15 min



Contact us to arrange a viewing:

Phone

+44(0)20 7770 6001

Email

events@trumanbrewery.com

Drop in

The Truman Brewery Events Department,
E y's Yard,
15 Hanbury Street,
London E1 6QR