

THE DRAY WALK GALLERY

The Dray Walk Gallery is a dual aspect open plan blank canvas of 2,650sqft, situated in the heart of Dray Walk, a promenade of contemporary retail units off Brick Lane. The venue holds key positioning on the pedestrianised lane, benefitting from superb natural light and excellent footfall. It is perfect for smaller exhibitions, retail sales and showrooms.



The Old Truman Brewery is an historic 11 acre site on Brick Lane, London E1, housing a variety of unique dry hire, blank canvas-style spaces for rental / leasehold, ranging from 2,000 sqft to 100,000 sqft.

The site has grown to become 'The dynamic centre' for the new wave of young creative business entrepreneurs in London. It spans both sides of Brick Lane just to the east of The City. The 19 buildings that encompass the site range in architectural style and size, with courtyards and alleyways steeped in history and fable running between them, maintaining the ambience of this seventeenth century treasure chest. The Brewery combines both office and event spaces and is now the home to some of the most exciting, creative businesses and retail outlets in London. Cafes sit alongside hairdressers, clothing and furniture shops and at night Londoners descend upon The Brewery's own Vibe Bar, The Big Chill Bar and 93 Feet East live music venue for some of the coolest nights out in London.

Labelled "... the eye of the creative storm in London's East End" by The Independent, it is at the heart of one of London's most exciting areas.

The Old Truman Brewery continues to grow, remaining as pragmatic as ever and constantly adapting to the demands of the eclectic marketplace that it created.

CONTACT

020 7770 6100

events@trumanbrewery.com

www.trumanbrewery.com

The Old Truman Brewery

91 Brick Lane London E1 6QL

THE
OLD TRUMAN
BREWERY

TRUMAN

THE DRAYWALK GALLERY

Specifications

area (approx)
2,650sqft

ceiling height (approx)
3.4m to underside

capacity
150 dependant on use of premises

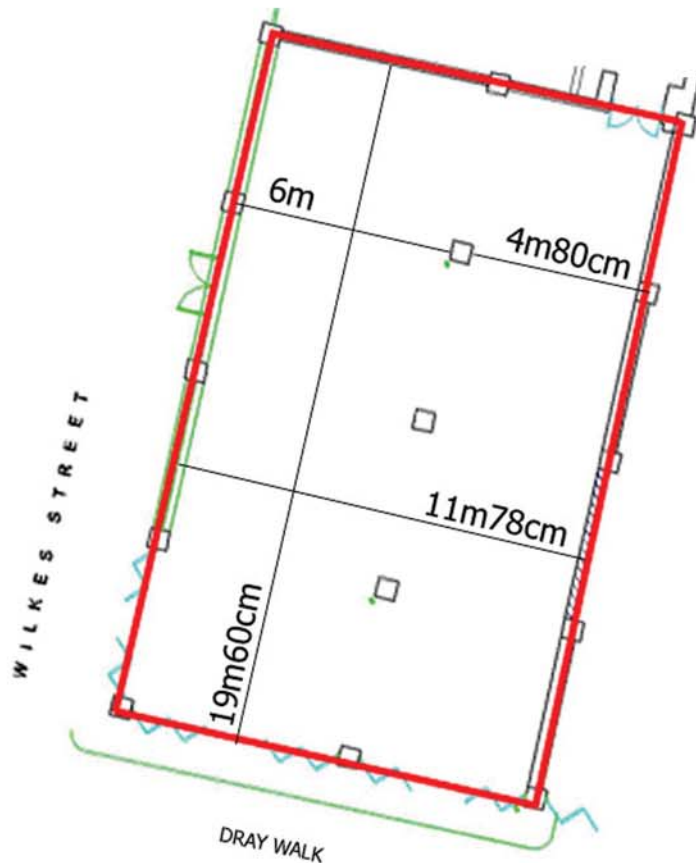
floor
ground

access
folding doors

power
13amp sockets

lighting
halogen and strip lighting throughout

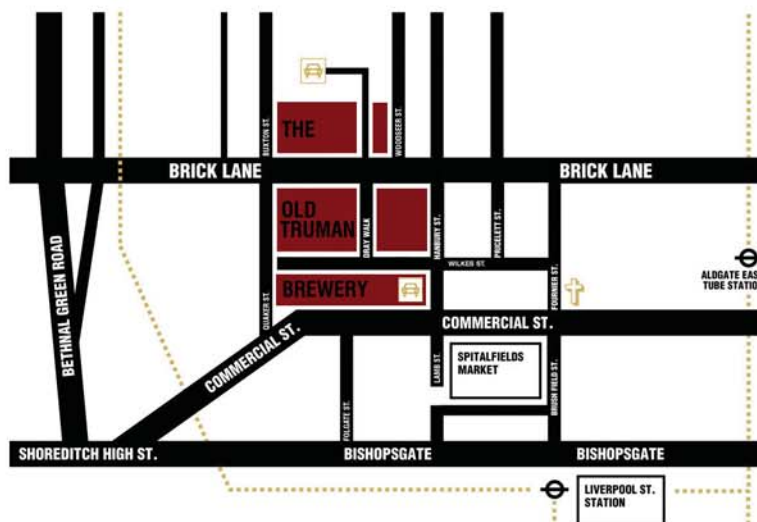
daylight
excellent due to dual aspect
glazed frontage



Price List

(excludind VAT, electrics & damage deposit)

day	hire fee
1	£1,500
2	£1,900
3	£2,500
4	£2,900
5	£3,150
6	£3,350
7	£3,500



CONTACT

020 7770 6100

events@trumanbrewery.com

www.trumanbrewery.com

The Old Truman Brewery

91 Brick Lane London E1 6QL

MISREPRESENTATION ACT

The particulars of this brochure are believed to be correct, but accuracy cannot be guaranteed and they are expressly excluded from any contract.

THE
OLD TRUMAN
BREWERY