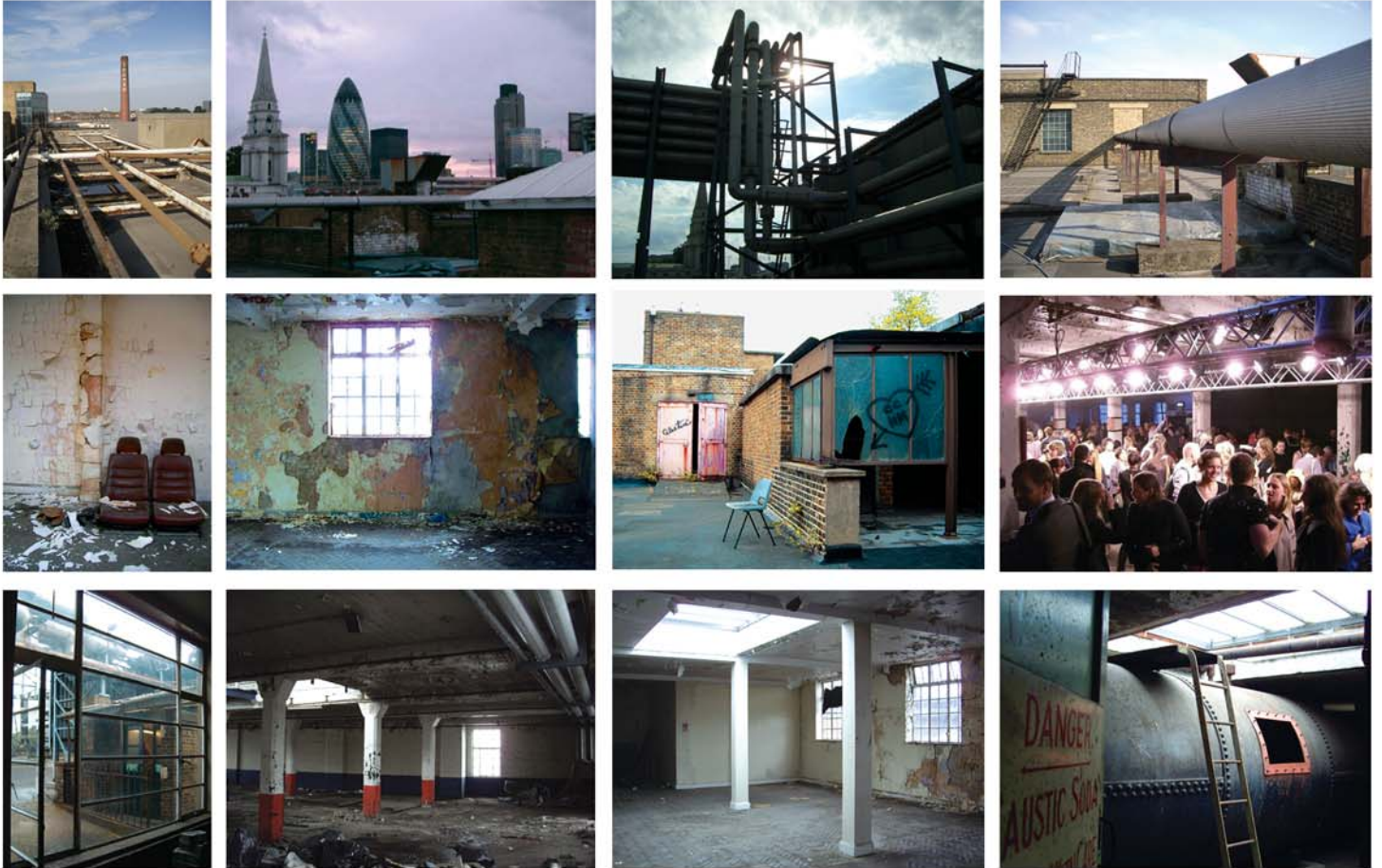


F BLOCK ROOF

Untouched for over 10 years, F Block Roof is one of the most precious and exclusive locations on offer at The Old Truman Brewery. Exteriors offer industrial landscapes of steel staircases, exposed brickwork, broken down pipework and spectacular views of the City of London. Interiors offer raw, disused and eerie backdrops for photo shoots, filming and even fashion shows. This location must be seen to be believed.



The Old Truman Brewery, once home to London's largest brewery, is now East London's primary destination point for the public and creative businesses alike. Eleven years of sensitive regeneration and investment has transformed over ten acres of derelict buildings into spectacular office, retail, leisure, exhibition and event spaces. The finely tuned mix of business and leisure has created a unique microcosm where tenants and visitors enjoy all the benefits of a protected yet vibrant environment. The Old Truman Brewery is an evolving, exciting and sociable place to find yourself: to eat in its restaurants, drink and dance in its bars, catch live music, shop in its boutiques, hunt out a bargain at its markets, check out an art exhibition, or just hang out, there is something to suit everyone's taste.

Many of the period and listed buildings on site have been converted into truly spectacular exhibition and event spaces, which are used throughout the year for a variety of both public and private events. Utilised for art exhibitions, sample sales, fashion shows, corporate functions, award ceremonies and trade shows, the event spaces can be transformed to suit any requirement.

Together these factors make the Old Truman Brewery a self-contained creative resource that is unique in Britain.

*Pricing, Availability and Specifications are available upon request.

CONTACT
020 7770 6100
events@trumanbrewery.com
www.trumanbrewery.com
The Old Truman Brewery
91 Brick Lane London E1 6QL

THE
OLD TRUMAN
BREWERY

TRUMAN