

# F BLOCK T5

F Block T5 is one of five rooms that make up Brick Lane's most exceptional collection of exhibition halls, situated in a newly redeveloped warehouse of over 53,000 sqft. T5 is the central room encircled by four first floor event spaces in F block, making it a multipurpose space that can meet any requirement. T5's floor space is of an interesting & unusual shape; the space comprises of a very large amount of internal wall space as well as access to an outdoor courtyard. T5 is suitable for exhibitions, filming & photo shoots, music videos, parties, trade shows & receptions.



The Old Truman Brewery is an historic 11 acre site on Brick Lane, London E1, housing a variety of unique dry hire, blank canvas-style spaces for rental / leasehold, ranging from 2,000 sqft to 100,000 sqft.

The site has grown to become 'The dynamic centre' for the new wave of young creative business entrepreneurs in London. It spans both sides of Brick Lane just to the east of The City. The 19 buildings that encompass the site range in architectural style and size, with courtyards and alleyways steeped in history and fable running between them, maintaining the ambience of this seventeenth century treasure chest. The Brewery combines both office and event spaces and is now the home to some of the most exciting, creative businesses and retail outlets in London. Cafes sit alongside hairdressers, clothing and furniture shops and at night Londoners descend upon The Brewery's own Vibe Bar, The Big Chill Bar and 93 Feet East live music venue for some of the coolest nights out in London.

Labelled "... the eye of the creative storm in London's East End" by The Independent, it is at the heart of one of London's most exciting areas.

The Old Truman Brewery continues to grow, remaining as pragmatic as ever and constantly adapting to the demands of the eclectic marketplace that it created.

THE  
OLD TRUMAN  
BREWERY

#### CONTACT

020 7770 6100  
events@trumanbrewery.com  
www.trumanbrewery.com  
The Old Truman Brewery  
91 Brick Lane London E1 6QL

TRUMAN  
BREWERY

# F BLOCK T5

## Specifications

area (approx)  
8190 sqft / 760 sqm

ceiling height  
8.8ft / 2.7m  
to underside of beams

capacity  
200 dependant on use of premises

toilets  
available

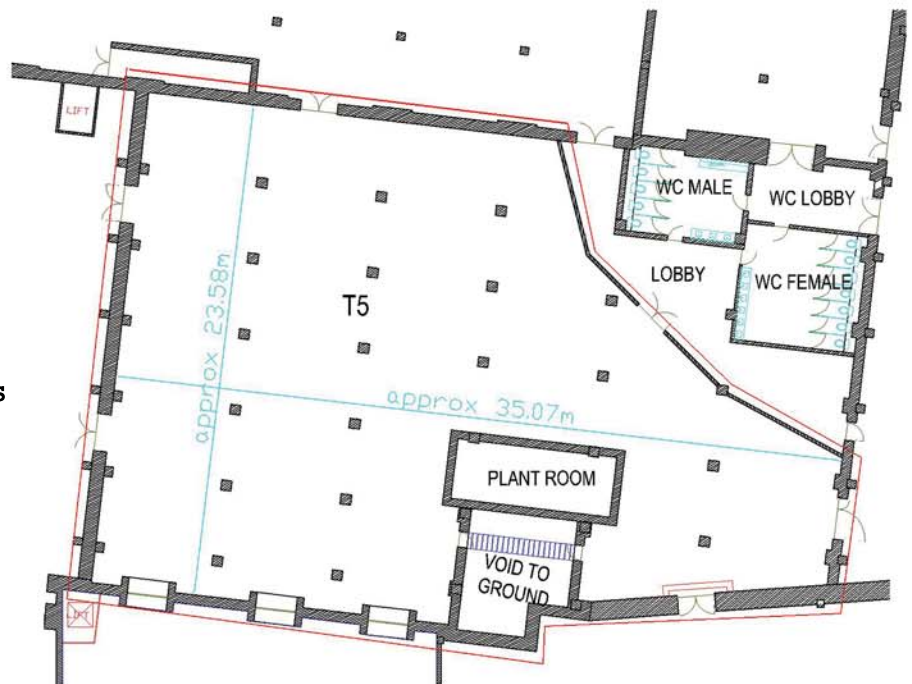
floor  
first

heating  
n/a

power  
13amp twin sockets & 63amp 3 phase C-form socket

lighting  
strip lighting throughout

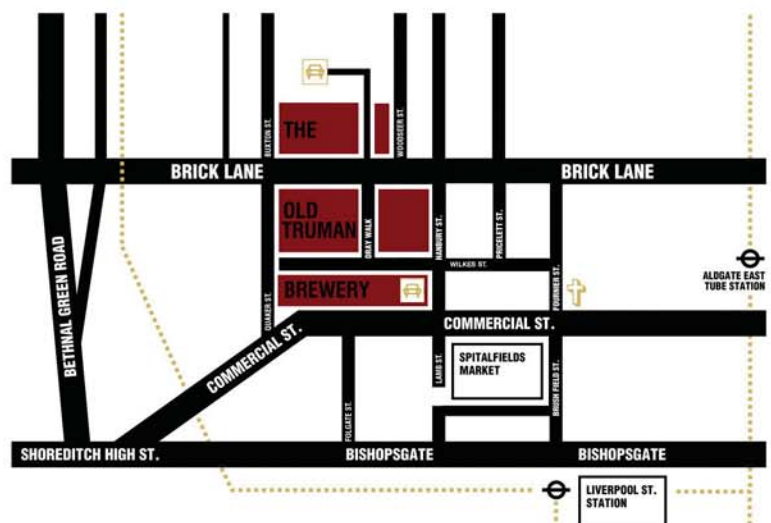
daylight  
fair throughout venue



## Price List

(excluding VAT, electrics & damage deposit)

day	hire fee
1	£2,640
2	£4,400
3	£5,600
4	£6,640
5	£7,200
6	£7,600
7	£8,000



### CONTACT

020 7770 6100

events@trumanbrewery.com

www.trumanbrewery.com

The Old Truman Brewery

91 Brick Lane London E1 6QL

### MISREPRESENTATION ACT

The particulars of this brochure are believed to be correct, but accuracy cannot be guaranteed and they are expressly excluded from any contract.

**THE  
OLD TRUMAN  
BREWERY**