

THE ATLANTIS GALLERY

The Atlantis Gallery is a spectacular 12,000 sqft white open plan gallery space suitable for exhibitions, trade shows, conferences and fashion shows. The space also has a 4,000 sqft mezzanine level overlooking the main gallery and floor to ceiling windows leading to a large patio with views of the City of London. The Atlantis Gallery benefits from ceilings of over 7 metres in height and two rows of skylights spanning the length of the room. The Atlantis Gallery is a truly breathtaking space like no other in Central London.



The Old Truman Brewery is an historic 11 acre site on Brick Lane, London E1, housing a variety of unique spaces for hire, ranging from 2,000 sqft to 100,000 sqft.

The Old Truman Brewery has venues on its roster which have been used for the entire spectrum of events - film shoots, fashion shows, award ceremonies, exhibitions, trade shows, conferences, corporate parties, product launches and sample sales to mention a few.

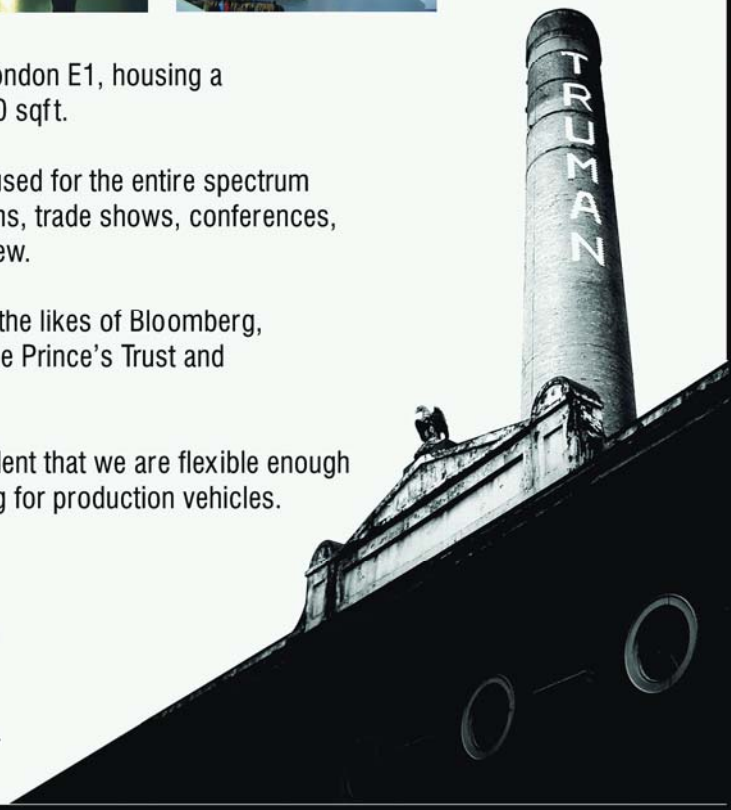
High profile events have been hosted at The Old Truman Brewery by the likes of Bloomberg, LWT, Nike, Diesel, Samsung, Hewlett Packard, Topshop, Hermes, The Prince's Trust and English Heritage.

We have nine years' experience in hiring event spaces and are confident that we are flexible enough to accommodate your needs, including the availability of ample parking for production vehicles.

THE
OLD TRUMAN
BREWERY

CONTACT

020 7770 6100
events@trumanbrewery.com
www.trumanbrewery.com
The Old Truman Brewery
91 Brick Lane London E1 6QL



THE ATLANTIS GALLERY

Specifications

size

12,000 sqft main floor
4,000 sqft mezzanine

capacity

800 dependant on use of premises

ceiling height

24 ft to underside of beams (approx)

production rooms:

one

cloakroom

one

toilets

10 unisex

floor

second

access

Brick Lane
goods lift (8ft: 5ft: 9.2ft)
stairs
hatch for craning larger objects

lights

strip & sodium lighting throughout

power

2 x 100 amp 3 phase
13 amp sockets

daylight

excellent

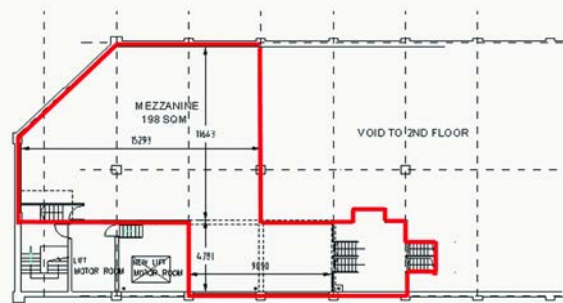
heating

2 x gas heaters

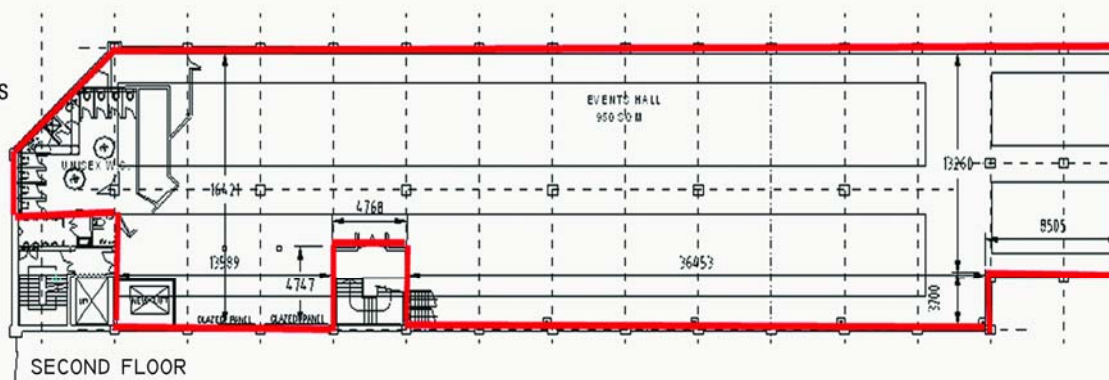
Price List

(excluding VAT, electrics & damage deposit)

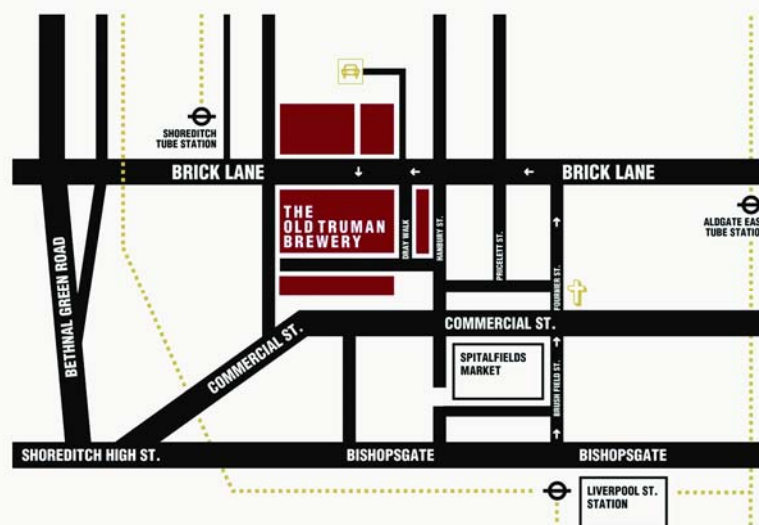
days	hire fee
1	£4,000
2	£6,700
3	£8,700
4	£9,900
5	£10,800
6	£11,500
7	£12,000



MEZZANINE LEVEL
SECOND FLOOR



SECOND FLOOR



CONTACT

020 7770 6100
events@trumanbrewery.com
www.trumanbrewery.com
The Old Truman Brewery
91 Brick Lane London E1 6QL

MISREPRESENTATION ACT

The particulars of this brochure are believed to be correct, but accuracy cannot be guaranteed and they are expressly excluded from any contract.

THE
OLD TRUMAN
BREWERY