

STUDIO 95

Situated at ground floor street level on the west side of the Old Truman Brewery estate with dual aspect to both Brick Lane and Quaker Street, Studio 95 is 6,300 sqft of self-contained studio like open space with hard wood flooring and white painted walls. In addition to the main space there are three ancillary rooms, ample toilets, kitchenette facilities, and a lobbied frontage to Brick Lane affording excellent footfall. Studio 95 is a truly unique space ideal for filming, exhibitions, small trade shows, exhibitions and retail opportunities.



The Old Truman Brewery is an historic 11 acre site on Brick Lane, London E1, housing a variety of unique spaces for hire, ranging from 2,000 sqft to 100,000 sqft.

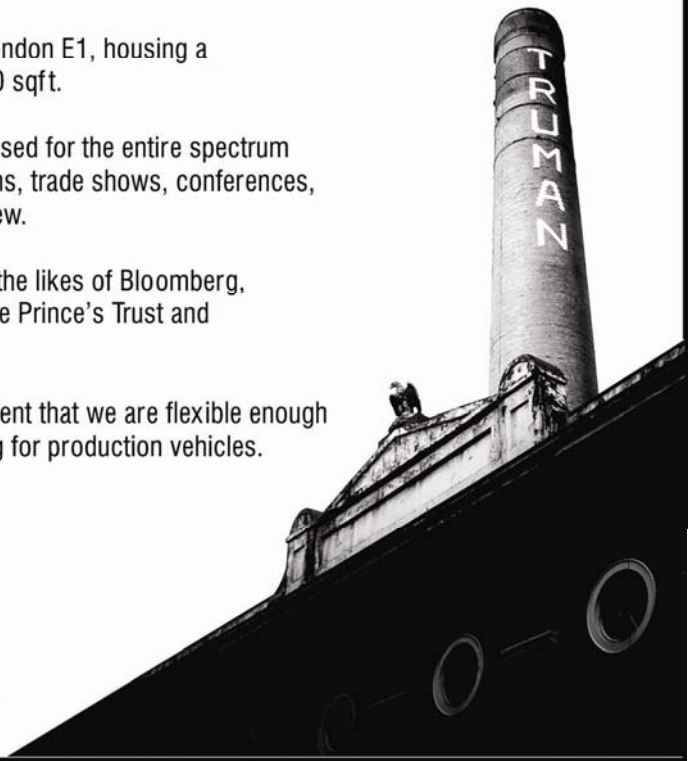
The Old Truman Brewery has venues on its roster which have been used for the entire spectrum of events - film shoots, fashion shows, award ceremonies, exhibitions, trade shows, conferences, corporate parties, product launches and sample sales to mention a few.

High profile events have been hosted at The Old Truman Brewery by the likes of Bloomberg, LWT, Nike, Diesel, Samsung, Hewlett Packard, Topshop, Hermes, The Prince's Trust and English Heritage.

We have nine years' experience in hiring event spaces and are confident that we are flexible enough to accommodate your needs, including the availability of ample parking for production vehicles.



CONTACT
020 7770 6100
events@trumanbrewery.com
www.trumanbrewery.com
The Old Truman Brewery
91 Brick Lane London E1 6QL



STUDIO 95

Specifications

area
6,350 sqft (approx)

capacity
dependant on use of premises - 250 (approx)

ceiling height
3m to underside of light coffers

production rooms
three

kitchen
1 small room with sink and 13 amp sockets

toilets
3 mens + 3 womens + 1 disabled

floor
ground

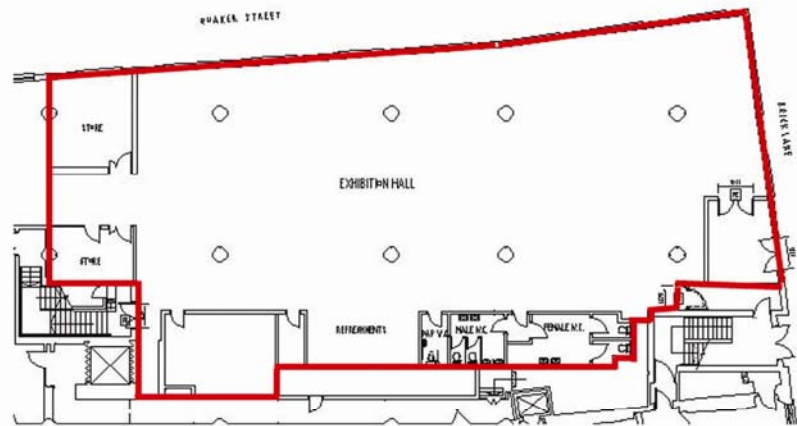
access
from Brick Lane and rear loading bay

heating
central heating throughout

power
13 amp sockets
63 amp 3 phase

lighting
strip lighting throughout

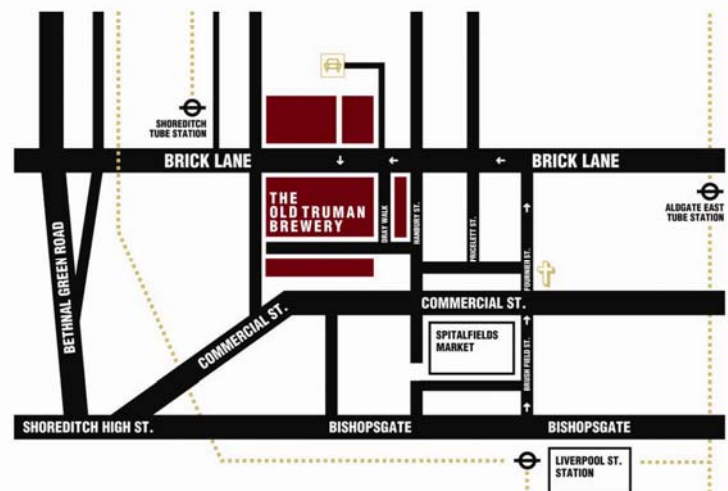
daylight
fair throughout venue



hire fee: £5,000+VAT
electrics: £150+VAT
damage deposit: £800

**THE
OLD TRUMAN
BREWERY**

CONTACT
020 7770 6100
events@trumanbrewery.com
www.trumanbrewery.com
The Old Truman Brewery
91 Brick Lane London E1 6QL



MISREPRESENTATION ACT

The particulars of this brochure are believed to be correct, but accuracy cannot be guaranteed and they are expressly excluded from any contract.